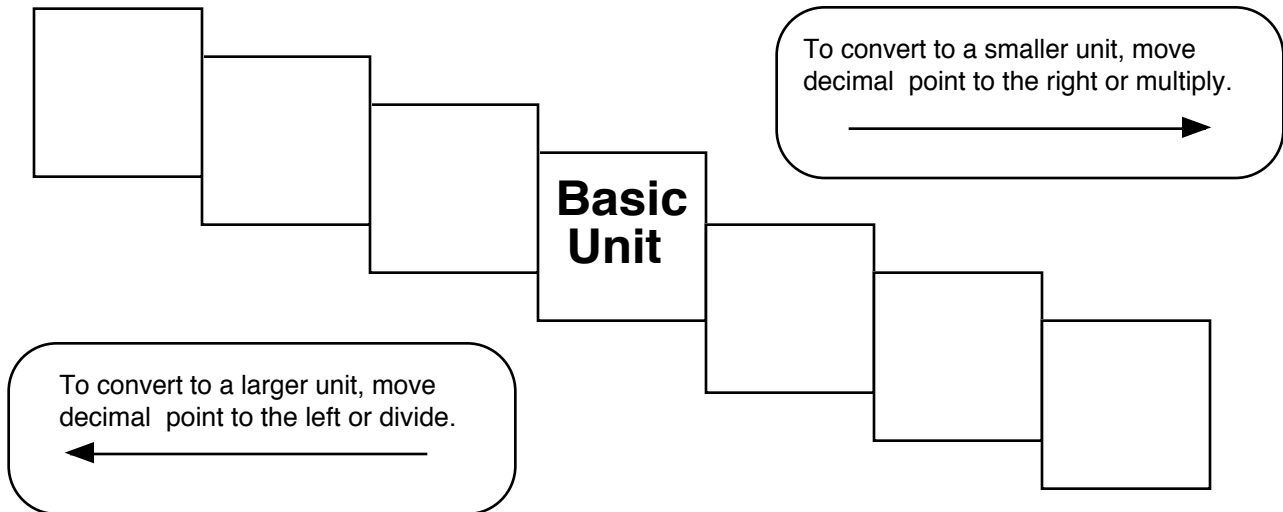


Metric Mania

Conversion Practice

Name _____



Try these conversions, using the ladder method.

$1000 \text{ mg} = \underline{\hspace{2cm}} \text{ g}$

$1 \text{ L} = \underline{\hspace{2cm}} \text{ mL}$

$160 \text{ cm} = \underline{\hspace{2cm}} \text{ mm}$

$14 \text{ km} = \underline{\hspace{2cm}} \text{ m}$

$109 \text{ g} = \underline{\hspace{2cm}} \text{ kg}$

$250 \text{ m} = \underline{\hspace{2cm}} \text{ km}$

Compare using $<$, $>$, or $=$.

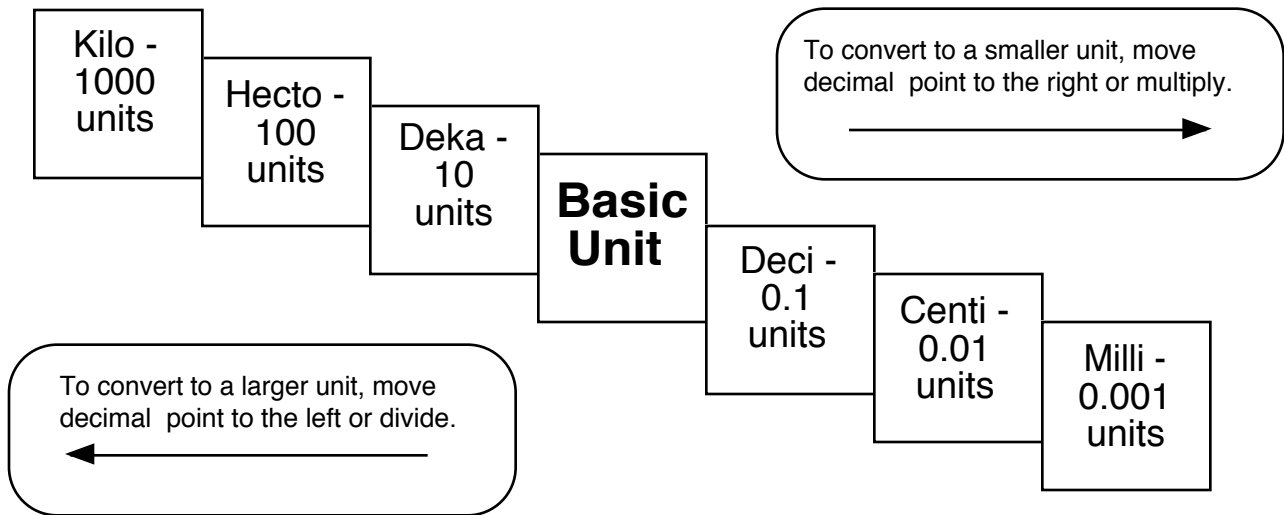
$56 \text{ cm} \bigcirc 6 \text{ m}$

$7 \text{ g} \bigcirc 698 \text{ mg}$

Metric Mania

Conversion Practice

Overhead Copy



Try these conversions, using the ladder method.

$1000 \text{ mg} = \underline{\hspace{2cm}} \text{ g}$

$1 \text{ L} = \underline{\hspace{2cm}} \text{ mL}$

$160 \text{ cm} = \underline{\hspace{2cm}} \text{ mm}$

$14 \text{ km} = \underline{\hspace{2cm}} \text{ m}$

$109 \text{ g} = \underline{\hspace{2cm}} \text{ kg}$

$250 \text{ m} = \underline{\hspace{2cm}} \text{ km}$

Compare using $<$, $>$, or $=$.

$56 \text{ cm} \bigcirc 6 \text{ m}$

$7 \text{ g} \bigcirc 698 \text{ mg}$

Conversion Challenge

Write the correct abbreviation for each metric unit.

1) Kilogram _____

4) Milliliter _____

7) Kilometer _____

2) Meter _____

5) Millimeter _____

8) Centimeter _____

3) Gram _____

6) Liter _____

9) Milligram _____

Try these conversions, using the ladder method.

1) 2000 mg = _____ g

6) 5 L = _____ mL

11) 16 cm = _____ mm

2) 104 km = _____ m

7) 198 g = _____ kg

12) 2500 m = _____ km

3) 480 cm = _____ m

8) 75 mL = _____ L

13) 65 g = _____ mg

4) 5.6 kg = _____ g

9) 50 cm = _____ m

14) 6.3 cm = _____ mm

5) 8 mm = _____ cm

10) 5.6 m = _____ cm

15) 120 mg = _____ g

Compare using <, >, or =.

16) 63 cm ○ 6 m

17) 5 g ○ 508 mg

18) 1,500 mL ○ 1.5 L

19) 536 cm ○ 53.6 dm

20) 43 mg ○ 5 g

21) 3.6 m ○ 36 cm

Metric Mania Answer Keys

Conversion Practice

NOTE: See overhead copy for the staircase boxes.

$$1000 \text{ mg} = 1 \text{ g}$$

$$160 \text{ cm} = 1600 \text{ mm}$$

$$109 \text{ g} = 0.109 \text{ kg}$$

$$1 \text{ l} = 1000 \text{ ml}$$

$$14 \text{ km} = 14000 \text{ m}$$

$$250 \text{ m} = .250 \text{ km}$$

$$56 \text{ cm} < 6 \text{ m}$$

$$7 \text{ g} > 698 \text{ mg}$$

Conversion Challenge

1. kg

2. m

3. g

4. ml

5. mm

6. l

7. km

8. cm

9. mg

1. 2 g

2. 104000 m

3. 4.8 m

4. 5600 g

5. .8 cm

6. 5000 ml

7. 0.198 kg

8. 0.075 l

9. 0.5 m

10. 560 cm

11. 160 mm

12. 2.5 km

13. 65000 mg

14. 63 mm

15. 0.12 g

16. <

17. >

18. =

19. =

20. <

21. >